

# 2017 Eastern Idaho Ag Expo Equipment Loading Schedule for Holt Arena **Sunday January 15<sup>th</sup> & Monday January 16<sup>th</sup>**

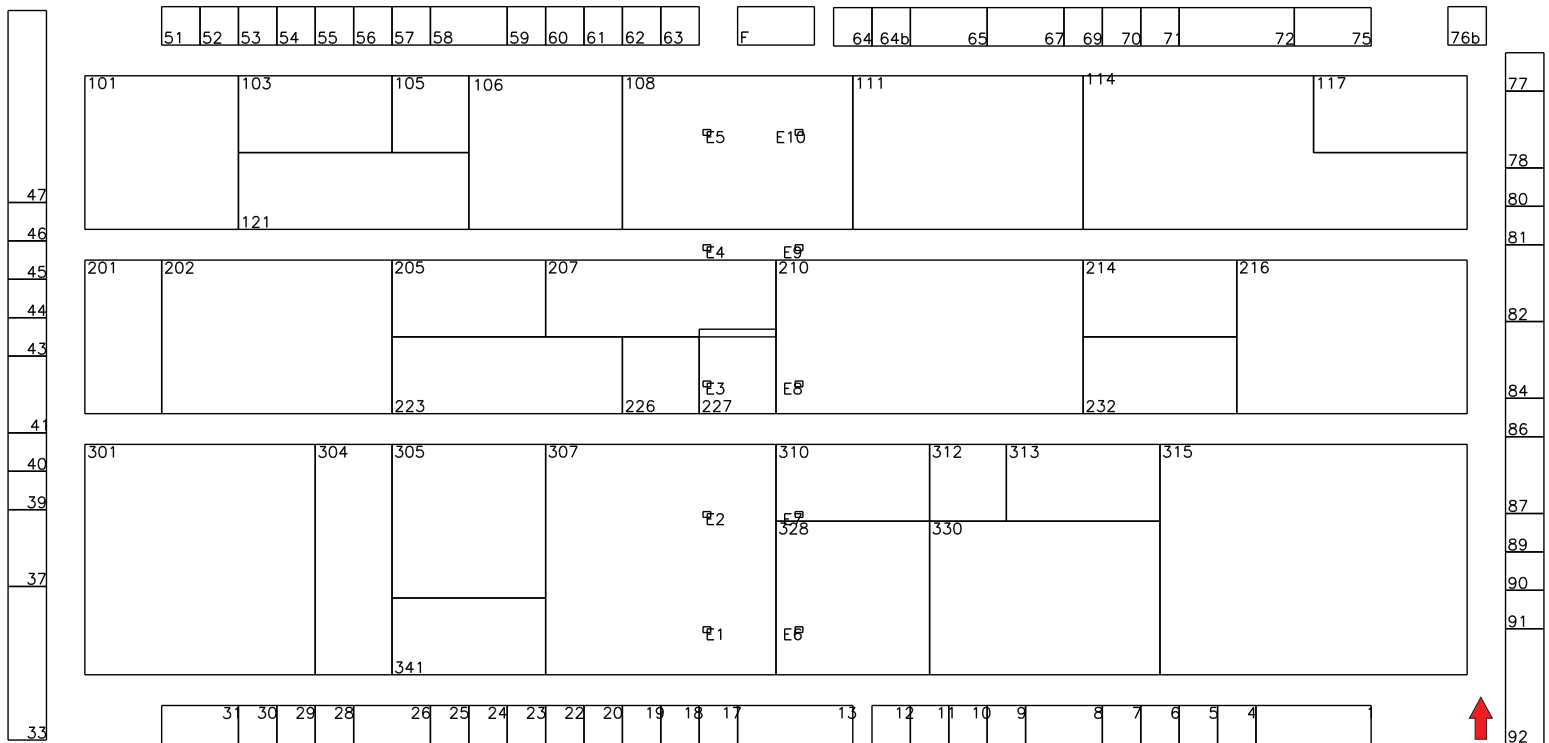
This is the official loading schedule for the 2017 Eastern Idaho Ag Expo at Holt Arena. As always we appreciate your cooperation in making this event a smooth one. Our objective is to stay on schedule, or get ahead of schedule. Obviously the promptness of all companies in relation to their load in time greatly influences this. So please read on, and call us if you have any questions.

Below you see the Holt Arena floor plan. All equipment and displays will enter Holt Arena through the Northwest ramp, or the bottom right hand corner of the floor plan. There will be Holt Arena personnel coordinating the load in both at the top and bottom of the ramp. Please check in with them so they know you are on-site, and can start getting you into the loading rotation. Please be patient with them. They will do the best they can to get you in the building as soon as possible.

Your load in time can be found on the alphabetical list on the next page. You are required to check in 60 minutes prior to your scheduled time so that we know you are on site, and are ready to load. **IMPORTANT:** If you are running late, please notify us at (208) 989-5265. We will not wait for you if you do not communicate with us and your lateness inconveniences your fellow exhibitors.

Equipment can be staged in the far reaches of the northeastern portion of the Holt Arena parking lot the week leading up to load in. **Please do not stage any equipment anywhere near the main entrances of Holt Arena itself or leave any equipment in designated handicap parking.**

Additionally there will be a spray washer available compliments of Watts Steam Store on the Northeast corner, or the lower left hand corner of the floor plan.



**X - Spray washer here; Compliments of Watts Steam Store**

**Equipment will enter here**

**Loading Schedule for the 2017 Eastern Idaho Ag Expo; Holt Arena, Pocatello**

**Bulk Space Times**

<b>Company</b>	<b>Space</b>	<b>Time</b>
AGRI-SERVICE	202	Sunday 1pm
AG-VANTAGE, INC.	223	Sunday 4pm
AG-WEST DISTRIBUTING	305	Sunday 2pm
BETTER BUILT MFG.	328	Monday 10am
COBALT TRUCK EQUIPMENT	224	Sunday 4pm
DOUBLE L	315	Monday 3pm
DOUBLE M AG & IRRIGATION	341	Sunday 2pm
E-Z TARP	312	Monday 12pm
G&R AG PRODUCTS	330	Monday 12pm
GENERAL IMPLEMENT	310	Monday 10am
GOLDEN WEST IRRIGATION	105	Sunday 2pm
HARRISTON MAYO LLC	205	Sunday 3pm
INTERMOUNTAIN NEW HOLLAND	214	Monday 10am
JACKIE'S CONCESSIONS	601	Sunday 1pm
KENWORTH SALES CO.	313	Monday 12pm
LEMKEN	304	Sunday 1pm

<b>Company</b>	<b>Space</b>	<b>Time</b>
LOCKWOOD MFG.	210	Sunday 4pm
LOGAN TRI STEEL MFG.	108	Sunday 4pm
MCNEIL MARKETING CO.	101	Sunday 12pm
MILESTONE	216	Monday 1pm
MOUNTAIN VIEW EQUIPMENT	103	Sunday 2pm
PARMA COMPANY	232	Monday 10am
PIONEER EQUIPMENT	301	Sunday 12pm
PIONEER WEST	106	Sunday 3pm
REINKE IRRIGATION	201	Sunday 12pm
SCHOW'S TRUCK CENTER	121	Sunday 2pm
SPUDNIK EQUIPMENT	114	Monday 11am
STERLING FARM SUPPLY, INC.	117	Monday 8am
STOTZ EQUIPMENT	307	Monday 8am
TRINITY TRAILERS	207	Sunday 4pm
WESTERN STATES EQUIPMENT	111	Monday 8am
WESTERN TRAILER	223	Sunday 3pm

**10'x10' Space Times**

<b>Company</b>	<b>Space</b>	<b>Time</b>
ABILENE MACHINE CO.	077	Monday 8am -12pm
ADAMS GRAIN BINS	086	Monday 8am -12pm
AG ENGINEERING	064B	Monday 8am -12pm
AG LEADER TECHNOLOGY	084	Monday 8am -12pm
AGRASIZER, INC.	022	Monday 12pm - 4pm
AGRI-LINES IRRIGATION, INC.	037	Monday 12pm - 4pm
AGRI-STOR CO., INC.	001	Monday 8am -12pm
ALFOREX SEEDS	029	Monday 12pm - 4pm
AMERICAN PUMP CO.	078	Monday 8am -12pm
BANK OF COMMERCE, THE	006	Monday 8am -12pm
BANK OF IDAHO	054	Monday 12pm - 4pm
BIG DOG RENEWABLE ENERGY	019	Monday 12pm - 4pm
BIG IRON/AUCTION COMPANY	056	Monday 12pm - 4pm
BIO-LOGIC SOIL BUILDERS	070	Monday 8am -12pm
BMZ BIOLOGICAL	045	Monday 12pm - 4pm
CAPITAL PRESS	007	Monday 8am -12pm
CARL'S INC.	026	Monday 12pm - 4pm
CASTLE LAKE INSURANCE	025	Monday 12pm - 4pm
CLEARY BUILDING CORP.	053	Monday 12pm - 4pm
COMMERCIAL TIRE	072	Sunday 2pm
D&S TIRES, INC.	087	Monday 8am -12pm
DAVIS MACHINE LLC	041	Monday 12pm - 4pm
DIESEL DEPOT	047	Sunday 12pm
DYKMAN ELECTRICAL	076B	Monday 8am -12pm
ENVIRONMENTAL ABRASIVES	081	Monday 8am -12pm
EVCO HOUSE OF HOSE	052	Monday 12pm - 4pm
EXTREME INDUSTRIAL COATINGS	089	Monday 8am -12pm
FARM BUREAU MUTUAL INSUR	043	Monday 12pm - 4pm
FLEXCO	091	Monday 8am -12pm
GMAC STEEL INC.	018	Monday 12pm - 4pm
IDAHO AG CREDIT, FLCA	040	Monday 12pm - 4pm
IDAHO DEQ POCATELLO/IF	039	Monday 12pm - 4pm
IDAHO FISH & GAME-POCATELLO	063	Monday 12pm - 4pm
IDAHO POTATO COMMISSION	009	Monday 8am -12pm

<b>Company</b>	<b>Space</b>	<b>Time</b>
IDAHO POWER CO.-DA	044	Monday 12pm - 4pm
IDAHO STATE DEPT. OF AG	028	Monday 12pm - 4pm
INDUSTRIAL ELECTRIC MOTOR	031	Monday 12pm - 4pm
INDUSTRIAL VENTILATION	065	Monday 8am -12pm
ITC SERVICES	061	Monday 12pm - 4pm
KELLERSTRASS OIL	057	Monday 12pm - 4pm
KEY BANK	020	Monday 12pm - 4pm
LES SCHWAB TIRE-BLACKFOOT	033	Monday 12pm - 4pm
LIQUITUBE MARKETING	011	Monday 8am -12pm
LYNCH OIL INC.	064	Monday 8am -12pm
MAGAW/ SCHAEFFER OIL	008	Monday 8am -12pm
MAGNATION WATER SYSTEMS	017	Monday 12pm - 4pm
MAUPIN WELDING	067	Monday 8am -12pm
NEBRASKA IRRIGATION INC.	046	Monday 12pm - 4pm
NOFFSINGER MFG	082	Monday 8am -12pm
NORCO WELDING*SAFETY	058	Monday 12pm - 4pm
PILLAR BUTTE SEED	010	Monday 8am -12pm
PIVOTRAC MONITORING	071	Monday 8am -12pm
R&A EQUIPMENT	024	Monday 12pm - 4pm
R&H MACHINE, INC	004	Monday 8am -12pm
S&G ELECTRIC MOTOR REPAIR	055	Monday 12pm - 4pm
SCALES NW INC.	062	Monday 12pm - 4pm
SCALES UNLIMITED	005	Monday 8am -12pm
STEEL VISION CONSTRUCTION	075	Sunday 2pm
SUPERIOR CHAIN, INC.	080	Monday 8am -12pm
TEROG MFG. CO.	069	Monday 8am -12pm
TETON WEST CONSTRUCTION	092	Monday 8am -12pm
THERMO KING INTERMOUNTAIN	051	Monday 12pm - 4pm
TOMRA SORTING SOLUTIONS	030	Monday 12pm - 4pm
TOTAL SCALE SERVICE, INC.	023	Monday 12pm - 4pm
TROUBLE FREE LIGHTING	060	Monday 12pm - 4pm
VALLEY EQUIPMENT & IRR	012	Monday 8am -12pm
WATTS STEAM STORE	013	Monday 8am -12pm
WIPFLI LLP	090	Monday 8am -12pm

**Outside Space Times**

**Monday 8am-4pm; First Come-First Served**  
 BIG RACK SHACK, THE IDAHO FFA FOUNDATION  
 BISH TEC LLC WD DRIVE OVER GATER, LLC